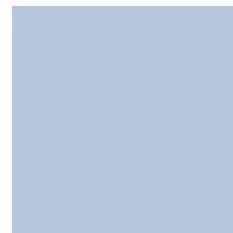
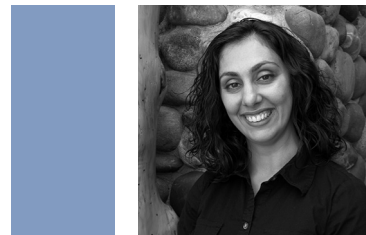




## COMMUNITY REPORT 2012-2013



# WE CAN BE MORE.



## BOARD MEMBERS

Timothy Taylor, President

Michael Dean, Vice President

Alice Cartwright, Treasurer

Margaret Kent Newton, Secretary

Anne Eisenberg

Joel Hass

Terry Kaufman

Veronica Kaufman

Jack Mador

Jordan Magill

Larry Saltzman

Michael Singer

When those words were first mentioned as a potential theme for building our community's financial resources, they struck a certain chord with us. We appreciated the possibility that we could move past putting out budgetary "fires" and scrambling to make ends meet for our Jewish community organizations. We envisioned programs and partnerships that engendered lasting relationships. We imagined families passing on the key Jewish values of tzedaka and tikkum olam, charity and repairing the world.

In this Annual Report, you'll find the stories and names of people who have already acted on the concept: **We Can Be More.** These organizations and individuals have imagined what an improved Jewish Sacramento would look like, and have taken steps to support that vision. For our youth, for our seniors, for our families, for our synagogues, for our Jewish community institutions – we are becoming more.

In the last year, the Jewish Community Foundation of the West has been a leader in Sacramento's efforts to become "more." We've helped organizations construct financial strategies for the future, creating endowment funds and investing more than \$7 million for philanthropic causes. We've led family workshops and participated in programming to build a proactive commitment to giving at any age and at any level. Internally, we've worked on setting policy and restructuring our own investments to take advantage of the current economic conditions and better support our donors. Because we believe strongly that **We Can Be More.**

We believe you can be more, too.

Start with a Donor-Advised Philanthropic Fund to make your giving as impactful as possible. Move on to an Endowment Fund – you can adopt a cause or an organization or personalize your giving each year. Leave a legacy gift as a part of your estate plan and ensure that what is important to you lasts beyond your lifetime. Together, **We Can Be More.**

The JCFW exists to build our entire community and work with every individual at any level of giving. Please be in touch with us to discuss how we can assist you in your philanthropy. We look forward to moving with you from strength to greater strength.

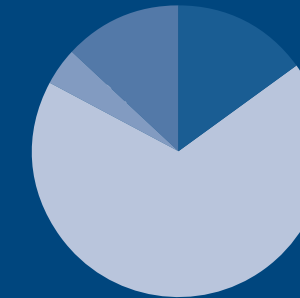
**We Can Be More.**

Timothy Taylor  
President

Hannah S. Olson  
Director of Philanthropy

## FOUNDATION DISTRIBUTED FUNDS IN 2012 \$1,109,503

Synagogues	15%
Other Local Jewish Orgs.	68%
Other Jewish Causes	4%
Secular Causes	13%



## INVESTMENT REPORT

JANUARY 1 – DECEMBER 31, 2012 AND 2011

	2012	2011
Growth Fund Portfolio A	\$4,176,775	\$3,827,523
Balanced Fund Portfolio B	974,375	895,070
Preservation Fund Portfolio C	198,285	331,402
Preservation Fund Portfolio D	148,211	125,778
Fixed Income Portfolio E	1,364,542	1,639,547
State of Israel Bond Fund Portfolio F	6,055	5,988
Sweep Account	27,830	89,154

## TAX PLANNING & CHARITABLE GIVING

Did you know that giving to the Foundation might earn you tax breaks?

If you donate cash or assets to the Foundation in one calendar year, you can take the tax deduction on that year's tax returns. You don't have to distribute the funds until you have decided where to send them, even if that is not for weeks, months, or years in the future. This means you can take your time making your philanthropic decisions, using the Foundation as a great tax planning tool for immediate needs.

Consult your tax adviser to determine applicability in your own circumstances.

# Financials

## STATEMENT OF ACTIVITY

YEAR ENDED DECEMBER 31, 2012

REVENUES	2012	2011
Donations	\$887,827	\$818,762
Investment income	117,375	106,059
Net realized/unrealized investment gain	323,654	(211,393)
<b>Total revenues</b>	<b>\$1,328,856</b>	<b>\$713,428</b>
EXPENSES		
Grant activities	\$733,101	\$645,710
Management and general	96,547	95,318
<b>Total expenses</b>	<b>\$829,648</b>	<b>\$741,028</b>
<b>Change in net assets</b>	<b>\$499,208</b>	<b>\$(27,600)</b>

## STATEMENT OF FINANCIAL POSITION

AS OF DECEMBER 31, 2012 AND 2011

ASSETS	2012	2011
Cash	\$11,830	\$19,767
Restricted cash & cash equivalents	379,249	542,819
Prepaid Expenses	2,027	2,573
Investments	6,516,824	6,371,643
Office equipment	670	939
<b>Total assets</b>	<b>\$6,910,600</b>	<b>\$6,937,741</b>
LIABILITIES & EQUITY		
Accounts payable	\$3,805	\$3,459
Funds held for others	2,846,196	3,372,891
Total net assets	4,060,599	3,561,391
<b>Total liabilities and net assets</b>	<b>\$6,910,600</b>	<b>\$6,937,741</b>





## BLANCHE AND NORMAN GINSBURG CAMP SCHOLARSHIP ENDOWMENT FUND

Judy Weiner's parents were avid supporters of Jewish camps, Jewish education, and synagogue and community-wide endeavors. Her mother, Blanche, grew up in the 1930s, attending Camp C.H.I. in Wisconsin, a program of the Chicago Hebrew Institute. Those camp experiences created friendships and memories that lasted a lifetime. Blanche met her husband Norman in Chicago and later settled in Los Angeles. They were married for 64 years and had 4 children, 12 grandchildren and 12 great-grandchildren.

---

Helping children to attend overnight camp honors the memory of Blanche and Norman, and it provides an opportunity for the entire community to make an impact in a child's life.

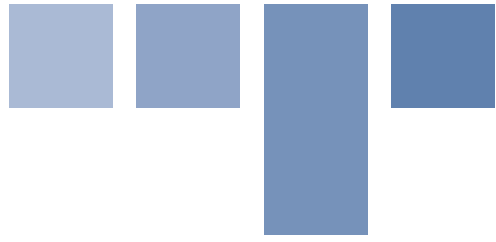
After the death of her parents, Judy and her husband Dr. Barry Weiner knew they wanted to build a legacy in memory of Blanche and Norman. Building on their passion for Jewish camps, they set up the Blanche and Norman Ginsburg Scholarship Endowment Fund, a fund that creates needs-based scholarships to families who would like their children to attend Jewish overnight camps. Helping children to attend overnight camp honors the memory of Blanche and Norman, and it provides an opportunity for the entire community to make an impact in a child's life.

As with all its clients, JCFW endeavored to help Judy build a legacy that will serve our community for years to come. "It was a pleasure working with the JCFW while establishing the Norman and Blanche Ginsburg Memorial Camp Scholarship Fund. We worked directly with Hannah Olson, the Director of Philanthropy. With her input and guidance, we were able to establish the fund with ease. Our experience has demonstrated that our fund is in good hands, now and in the future."





## TRANSPORTATION SUPPORT FOR THE JEWISH ELDERLY ENDOWMENT FUND



It took a few months for Stan and Marion Leff to agree on the details for their Endowment Fund. Marion felt passionately about the cause, and Stan wanted to make sure the vehicle was exactly right. That's when they turned to the Jewish Community Foundation of the West. Working together, they were able to put all the pieces into place and Stan, Marion, and JCFW got the results that mattered.

Transportation for seniors is not the prominent issue in our community, but it makes a vital difference for many of our friends and neighbors. The Transportation Support for the Jewish Elderly Endowment Fund was established in April of 2013. Its goal is simple — to help seniors be an active part of the Sacramento community. That means the fund could help people get to public or private events, synagogue services and activities, doctors' appointments, and more. "We don't want our senior community to be isolated by something as easily solvable as transportation issues," explained Marion.

Through his research, it was clear to Stan that the Leffs' investment would be in good hands with the Foundation. "I looked at the reports and the investment strategies. It was clear that the Foundation would be able to really make a long-term impact with our fund."

Marion encourages others to participate as well. "We'd be happy to have people contribute to this fund and expand its impact, or to set up additional funds that will benefit other facets of the community. Everyone comes out ahead."

"I looked at the reports and the investment strategies. It was clear that the Foundation would be able to really make a long-term impact with our fund."







## SHALOM SCHOOL SCHOLARSHIP ENDOWMENT FUND

A single person can make a big difference. Michael Rochman, a former board member of Sacramento's only community day school, wants many people to make that difference for students at Shalom School.

Each year, Shalom School gives more than \$170,000 in student scholarships. Forty-one percent of students receive financial aid in some form, and it takes its toll on the school's bottom-line budget. "We never want to turn students away for financial reasons," says Vice President of Development Gayle Govenar. "That's why this was such a wonderful gift to the school."

---

**If there is a way for our family, and our community, to help more students attend Shalom School and to help the school continue running a quality program, then we should do that.**

In late 2012, Michael and his wife Tammy decided to start the Shalom School Scholarship Endowment Fund by directing a contribution from their JCFW donor-advised fund to form a new, separate endowment. Seeking help from other generous friends and committed community members, their goal was to provide the seed money for a fund that would eventually grow to a size large enough to cover scholarship costs on an annual basis. "Here's an organization that provides a real, tangible benefit to the community," said Michael. "Those kids will go out into the world with their Jewish education and be active, participating members of the community. If there is a way for our family, and our community, to help more students attend Shalom School and to help the school continue running a quality program, then we should do that."

Ever an advocate of endowment funds, Michael encourages others to create endowments to support their favorite causes or charities. "If you want to be a financially mature non-profit, you need an endowment fund. Period."





# FUNDS

## DONOR ADVISED FUNDS

ADA Horowitz/Goldscheid Philanthropic Fund

Alan and Nancy Brodovsky Philanthropic Fund

Albert M. Dreyfuss Philanthropic Fund

Alex Fahn and Shirley Fahn Philanthropic Fund

Andrew and Ruth Baron Family Fund

Barbara Ansel Philanthropic Fund

Berrin Family Gift Fund

Birch Family Charitable Trust

Blank Fund

Carol J. Licker Family Trust

Cartwright Philanthropic Fund

DeLugach Smith Philanthropic Fund

Dorothy Novack Philanthropic Fund

Eric and Jodi Liederman Fund

Ernie D. Grossman Fund

Esther and Dan Levy Family Fund

Fishbein Fund

Franklin and Janie Gumpert Philanthropic Fund

Gelfand-Rosenheimer Fund

Harold and Anne Eisenberg Fund

Hass Family Fund

Hayward Family Philanthropic Fund

Herman Family Donor Advised Fund

Ilfeld Family Philanthropic Fund

Irv Goldberg Family Philanthropic Fund

Irving Cooperman Philanthropic Fund

Jeff and Irit Winston Charitable Fund

Jerry and Eleanor Fishbein Memorial Fund

Jerry Pollack and Joan Gusinow Charitable Fund

Jessie and Daniel Yoshpe Philanthropic Fund

Joel and Louise Zimmerman Family Fund

Joy and Steve Cohan Tzedaka Fund

Kaufman Family Fund

Kaufman/Weinberg Philanthropic Fund

Ken and Nancy Fahn Philanthropic Fund

Khazzoom Family Charitable Fund

Landsberg Family Fund

Larry and Evelyn Lieb Philanthropic Fund

Larry and Sharon Saltzman Family Charitable Trust

Leff Family Philanthropic Fund

Len Family Foundation

Levy Family Philanthropic Fund

Lewis Family Philanthropic Fund

Mabee/Gumpert Philanthropic Fund

Mador Family Fund

Magill Family Fund

Martin R. London Lifelong Learning Fund

Matania Ginosar Foundation

Merewitz Family Israel Fund

Michael Forman Memorial Fund

Mike and Lynn Dean Family Fund

Mort & Marcy Friedman Charitable Fund

NEW Genesis Fund

Olson Family Philanthropic Fund

Pearl Family Philanthropic Fund

Phil and Robin Fine Family Philanthropic Trust

Polansky Family Charitable Fund

Rabin Charitable Trust

Rabinovitz Family Fund

Robert and Stacy Spector Charitable Fund

Robinson / Swartz Philanthropic Fund

Rosenbloom Family Philanthropic Fund

Roslyn Levy-Weintraub Philanthropic Fund

Steven and Sandra Felderstein Donor Advised Fund

Sadigh Harouni Charity Fund

Seth Merewitz Charitable Fund

Seth Rosenthal and Joi Barrett Philanthropic Fund

Shafick and Judith Alfi Memorial Fund

Shapiro Family Donor Advised Charitable Fund

Singer Family Fund

Slaton / Newton Philanthropic Fund

Small Philanthropic Fund

Steve and Carol Goldberg Family Fund

Steve and Judi Turtletaub Philanthropic Fund

Strasser Family Fund

Talia and Daniel Kaufman Family Fund

Tammy & Michael Rochman Charitable Fund

Veronica and Benjamin Kaufman Charitable Fund

WE Brown Philanthropic Fund

William and Shola Ostrow Philanthropic Fund

Wittlake Taylor Philanthropic Fund

Wolfe Hochman Family Fund

Zlotlow Family Fund

## DONOR ADVISED ENDOWMENTS

Aaron and Alyssa Prohofsky Endowment Fund

Adam Friedman Endowment Fund

Adam Poisner Endowment Fund

Alan and Dana Edelstein Family Endowment Fund

Andy Goldscheid Memorial Fund

Benjamin and Gabriel Harouni Endowment Fund

Blanche and Frank Goldstein  
Building Bridges Endowment Fund

Brett and Natalie Polan Endowment Fund

Chazzan Carl E. Naluai Jr. Steinway Fund

Danny Goldstein Decades of Devotion to Youth Fund

Eli Rosenthal Endowment Fund

Ethan and Eliot Liederman Charitable  
Endowment Fund

Ethan and Wyatt Brown  
Charitable Endowment Fund

Goldscheid Endowment Fund

Gumpert Family Endowment Fund

Hanna Rosenheimer Endowment Fund

Hannah Poisner Endowment Fund

Horst Brothers Endowment Fund

Jonah Cartwright Endowment Fund

Kate and Rachel Provance Endowment Fund

Lauren and Joshua Rosenblume Endowment Fund

Martha and Morris Levy Family Endowment Fund

Nathan and Keenan Fine Endowment Fund

Noa Esther Elliott Endowment Fund

Orly and Ava Fahn Endowment Fund

Poisner Family Endowment

Ruth Rosenthal Endowment Fund

Sara and Natalie Rochman Endowment Fund

Sarah Poisner Endowment Fund

Shenhar Endowment Fund

Steven and Sandra Felderstein  
Charitable Endowment Fund

Talia E. Gonzalez Endowment Fund

William and Shola Ostrow Mosaic Law Library  
Endowment Fund

Zoey Wittlake Endowment Fund

## ORGANIZATIONAL ACCOUNTS

American Friends of ELI Endowment Fund

American Friends of ELI Philanthropic Fund

Anna Forman Leadership Institute  
Philanthropic Fund

Annual Jewish Community Campaign Endowment

CBI Youth and Education Endowment Fund

CBI Sanctuary Endowment Fund

Congregation B’Nai Israel General Endowment

Congregation B’nai Israel General Fund

Congregation B’Nai Israel Maintenance Endowment

Congregation B’nai Israel Maintenance Fund

Congregation Beth Shalom Unity Endowment Fund

Fresh Producers Advance Fund

Fresh Producers Fresh Trust Fund

Friends of Albert Einstein Residence Center  
Philanthropic Fund

Hillel Alumni Dinner Fund

Hillel at Davis and Sacramento Fund

Hillel Len Family Lunch Fund

Hillel Sweep Fund

Home of Peace General Endowment

Home of Peace Perpetual Maintenance Fund

Home of Peace Pre-Need Fund

JCFW Endowment Fund for the Benefit of  
Hillel at Davis and Sacramento

Jewish Community Foundation of the West  
Endowment Fund

Jewish Community Foundation of the West  
Operating Fund

Jewish Federation of the Sacramento  
Region Endowment

Jewish Federation of the Sacramento  
Region Philanthropic Fund

Jewish Pioneer Cemetery Commision Fund

JFS Indigent Burial Fund

JFSR Fixed Income Fund

JFSR Investment Fund

JFSR PJ Library Fund

JFSR Taglit-Birthright Israel Fund

KOH Library Endowment Fund

KOH Library Philanthropic Fund

Loren Levy Mosaic Law Fund

NCJW Betty Reubin Family Shalom Fund

SAJE Endowment Fund

Shalom School Sweep Fund

Shirley Seave Scholar-in-Residence Fund

Special Grants Program of the Jewish  
Federation of the Sacramento Region

Theta Delta Xi- TDX Fund

TICVA Fund

TOR Maintenance Endowment

## PRIVATELY DESIGNATED ACCOUNTS

### FOR OUR SYNAGOGUES

Finegold Mosaic Law Endowment Fund

### FOR JEWISH EDUCATION

Jacob, Leo and Bertha Fishman Scholarship Fund

Judah Jacobson Scholarship Endowment Fund

Leonard V. Finder Hillel Lecture Series

Marvin and Linda Kamras  
25th Anniversary Scholarship Fund

Morton S. Goldstein, M.D.  
Memorial Endowment Fund

Shalom School Scholarship Endowment

William Belson Memorial Scholarship Fund

### FOR JEWISH CAMPS/ YOUTH GROUPS

Blanche and Norman Ginsburg Memorial  
Camp Scholarship Fund

Ginsburg Philanthropic Campership Fund

Hillard Fahn USY Scholarship Fund

Phillips Campership Endowment Fund

William and Sedelle Belson  
Campership Endowment Fund

William Henry Zimmerman  
URJ Campership Endowment Fund

### FOR OUR SENIORS

Transportation Support for the Elderly  
Endowment Fund

Trust Fund for Jewish Seniors

Trust Fund for Jewish Seniors Philanthropic Fund

### FOR COLLEGE EDUCATION

BMG Scholarship Endowment Fund

The Saber Scholarship Endowment Fund

### FOR ISRAEL

Teen Trips to Israel Endowment Fund

### FOR OUR YOUTH

Sandi Redenbach Mitzvah Project  
Endowment Fund

Youth Philanthropy Endowment Fund

[www.jcfwest.org](http://www.jcfwest.org)

THE JEWISH COMMUNITY FOUNDATION OF THE WEST

PO BOX 660663

SACRAMENTO, CA 95866



*Book of Life* by Michele Pulver Feldman

## WHAT DOES THE FOUNDATION DO?

The Jewish Community Foundation of the West works with individuals, families and organizations to establish and manage Endowment Funds and Philanthropic Funds. These sustain the long-term stability and viability of Jewish programs and services, and of other charitable programs of interest to our donors within our community and worldwide.

The Foundation works closely with each donor to devise a charitable giving plan that meets his or her specific objectives, from memorializing or honoring a loved one, to supporting favorite organizations, to teaching children the meaning of Tzedaka.

The primary goal of the Foundation is to promote and facilitate philanthropic giving by the community to ensure the future of the organizations that enhance and enrich our lives. We currently manage more than 175 funds that support a wide range of programs and services, including: Synagogue Programs, Jewish and Secular Educational Opportunities, Senior Services, Youth Philanthropic Activities, Community Enrichment and Synagogue Endowments.

**FOR MORE INFORMATION:** PLEASE VISIT [WWW.JCFWEST.ORG](http://WWW.JCFWEST.ORG), CALL 916-441-1613 , OR EMAIL [DIRECTOR@JCFWEST.ORG](mailto:DIRECTOR@JCFWEST.ORG).